

PAID ADVERTISING SECTION

EXPLORE

SOUTH LAKE UNION

SEATTLE'S DOWNTOWN LAKEFRONT NEIGHBORHOOD

Rethink
Urban™





When my managing editor offered me the assignment of writing a story about what's behind the tremendous momentum in **South Lake Union**, I jumped at the opportunity.

ALTHOUGH I'VE BEEN HEARING ABOUT THIS **DOWNTOWN NEIGHBORHOOD** FOR MONTHS, I HAVEN'T HAD A CHANCE TO SEE FOR MYSELF WHAT ALL THE EXCITEMENT IS ABOUT. SO I MADE A FEW CALLS, LACED UP MY WALKING SHOES AND SET OUT FOR **A DAY OF EXPLORATION**.

I start my journey at the aptly named "South Lake Union Discovery Center." If you haven't been there, it's an adventure all on its own – a veritable funhouse of information. I've arranged to meet with Ada Healey, vice president of real estate for Vulcan, a major land owner and developer in the neighborhood. She explains that the vision for South Lake Union evolved after years of planning by neighborhood and business leaders, city planners and builders. "Everyone knew that we had the opportunity to create something truly remarkable in South Lake Union; something exceptionally progressive and pioneering."

To illustrate that vision, Ada invites me to view a movie in the center's state-of-the-art theater. The short film paints a vivid picture of how South Lake Union will look in the future, including a streetcar circulating through the neighborhood, new condominiums and apartment homes, creative-minded companies buzzing with employees, a 12-acre lakefront park infused with people – on foot, on bike, on water. A neighborhood that embraces sustainability everywhere you look – from healthy residences and offices, green streets and open space, to a car-free lifestyle.

As the movie ends, the walls of the theater automatically open up and reveal a giant, 16 x 12 foot model of South

Lake Union which spans from Lake Union to downtown Seattle. With a push of a button, a row of lights appears on the model representing the upcoming South Lake Union streetcar line, which will begin boarding passengers as early as 2007. Ada explains that the streetcar will run every 10 to 15 minutes, easily linking riders to downtown shopping, restaurants, entertainment and light rail. She also points out Mercer Street, which will be reconfigured into a two-way, tree-lined boulevard with broad sidewalks and shops. Valley Street, too, will undergo a transformation, becoming a pedestrian and bike friendly lakefront avenue.



Ada then points out four different miniature-sized buildings on the model that depict Vulcan's newest condominium communities – Enso at 2201 Westlake, Veer Lofts, The Martin and Rollin Street (note: see related sidebars for more information). From her descriptions of each project, it's clear that they'll appeal to a wide variety of homebuyers with a range of tastes, budgets and lifestyles.

Time has gotten away from me and I'm anxious to get out and experience South Lake Union as it is today, so I grab some brochures, thank her for the information and head out on my own. *[continued on next page]*

South Lake Union Discovery Center



Lake Union Park



Being green doesn't have to mean dehydrated food, backpacks, and hiking boots.

It can simply mean using organic olives in your martini or carefully selecting where you choose to live.

GREEN: THE NEW BLACK

South Lake Union is growing up to be a "green" neighborhood, offering healthy alternatives to living. The neighborhood embraces all things green, including parks, streets, transportation alternatives – even buildings. In fact, all of Vulcan's featured condominium and apartment projects – in addition to the company's new commercial buildings in South Lake Union – are doing their part to save the planet by featuring energy-saving, environmentally friendly innovations.

When you choose green, you reduce your energy bills, breathe fresher air, and make a pretty powerful statement about how you choose to live. Choose green.

To learn more about South Lake Union's commitment to green, visit www.whatsgreen.com.

My first stop is the School of Visual Concepts (SVC) where I meet up with Larry Asher, co-director of the school. He explains that we are in the neighborhood's 8th Avenue District, where many creative companies reside. "In our building alone we have an advertising agency, website designers, photographers and an illustrator who works with *The New Yorker* and *Vanity Fair*. It's a virtual creative beehive."



To emphasize his point, Larry walks me past neighborhood art galleries and studios, a glass blowing hot shop and several eclectic businesses, including Jones Soda, Glazer's Camera and Banyas – a Russian inspired spa. As we cross the intersection of 9th Avenue and Harrison Street where Veer Lofts will soon take shape in the 8th Avenue District, I can almost picture a group of Veer loft-dwellers headed to the latest art exhibit at Patricia Cameron Gallery a few blocks away.

Following my guided tour, I stop off at Uptown Espresso to meet with Lori Main, general manager for the Pan Pacific Hotel. Uptown Espresso is in the Westlake/Terry District, home to many of the new eateries and retailers in the neighborhood, including Pande Cameron, Blue Moon Burgers, and Slo Joe's Bigtime Backyard BBQ.

[continued on next page]



COMING SOON > GATEWAY DISTRICT

Enso

Your Urban Sanctuary

LOCATION 2201 Westlake Avenue

URL www.ensoliving.com



They say living well is the best revenge. If that's true, then living at Enso should settle a lot of scores. The high-styled condominium community showcases 132 disarmingly refined homes which incorporate all of the finer elements you've come to expect out of life.

Boasting expansive windows with city and lake views, double-sided gas fireplaces, sleek Italian cabinetry, and natural stone surfaces, the sophisticated collection of homes range in design from a one bedroom condominium to an over 2,000-square-foot sky townhome. Homeowners are pampered by a host of amenities including street-level retail and dining, state-of-the-art exercise facility, rooftop terrace with outdoor kitchen area and an expansive community club room for entertaining. They will also be able to take advantage of its prime location, directly across from 2200 and a short stroll to nearby art galleries, theaters, and luxury shopping.

An in-city haven all your own. That's what Enso is all about.



WHAT'S IN THE FRIDGE

A "gourmet to go" supper from Whole Foods Market®

WHAT'S PLAYING ON YOUR STATE-OF- THE-ART HOME AUDIO SYSTEM

The Buena Vista Social Club

FAVORITE VACATION

New Zealand



WHEN NOT RELAXING AT HOME, MOST LIKELY FOUND

At the Pan Pacific bar sampling the latest red wine and chocolate pairing

SCHEDULE THE MOVERS

Winter 2008

FACES IN THE NEIGHBORHOOD > SUPERBIG Collective

Imagine five super forces in one super big space, possessing super big potential. No, it's not the next X-Men sequel – it's the SUPERBIG Collective, a remarkable consortium of creative businesses in South Lake Union's emerging 8th Avenue District. Soon, the group will be sharing even more creative space by adding the SUPERBIG Gallery, a gallery and events hall that will showcase well-known artists at quarterly events.

Concrete | This urban retail boutique is dedicated to fashion and skating and committed to art, culture, and the individual lifestyle.

SUPERBIG Creative | With roots and lifestyle stemming from the action and snow sports industries, SUPERBIG Creative brings an unconventional and interactive approach to the design process.

PLWP (Patrick Lennox Wright Photography) | For corporate or special events, PLWP will even set up an on-location shoot

booth where people can capture their very own brief history in time with personal photos taken throughout the event.

Spacecraft | This company combines ideas from overseas travel, pop culture and art to create one-of-a-kind handmade clothing found in boutiques and board sports shops around the world.

Signal | Founded in 2004 by a professional snowboarder, Signal's artfully designed snowboards are sold only to independent shops via worldwide distributors.



www.superbigcreative.com

NOW LEASING > CASCADE NEIGHBORHOOD

Alley24

A Laundry List of Appealing Elements

LOCATION Across the street from REI**URL** www.alley24.com

Old World charm meets modern design at Alley24, located across the street from REI. Featuring a mix of 172 apartments, street-level boutiques, restaurants and cafes and a high-performance office building housing nearly 1,000 creative-minded employees, Alley24 takes its name from the European-inspired alleyway that runs through its center. Shoppers, residents and office workers can stroll through the wide pedestrian alleyway, which will be enriched with historic brick facades, canopies and distinctive art pieces.

An appealing contrast of vintage and contemporary features is also found in Alley24's residences, with several homes that include exposed interior brick walls preserved from the historic Richmond Laundry facility. Residents of the studios, lofts, one and two bedroom apartments and townhomes will be able to take full advantage of breathtaking city and lake views, street-level retail and dining as well as in-building amenities such as a fitness center, community suite with pool table, movie room with big screen television, business center and conference room. And up on one of the two rooftop decks, a barbecue grill and outside seating area will serve as the perfect spot to meet up with friends or simply survey the bustle of activity below.

WHAT'S IN THE FRIDGE

Who has time to cook – just grab something downstairs

WHAT'S PLAYING ON YOUR IPOD

Postal Service

FAVORITE VACATION

Sampling dim sum in San Francisco's Chinatown district

**WHEN NOT RELAXING AT HOME,****MOST LIKELY FOUND**

Sharing a pitcher with friends at Paddy Coyne's

SCHEDULE THE MOVERS

Now!

Grabbing seats next to the window, Lori explains that Pan Pacific will be opening in October as part of the neighborhood's signature "2200" community, and she's looking forward to all of the amenities that will be available to 2200's condominium residents and hotel guests alike. "What a treat it will be to be able to grab a latte, relax at the spa, or pick up an organic gourmet meal at Whole Foods Market® – all within steps of the hotel."

Lori explains that the hotel, itself, will become a community hub. "Pan Pacific will be the place where you want your out-of-town guest to stay, the bar you go to meet your friends, the venue where you hold your most special celebrations."

After we finish our lattes, I start off for the Cascade neighborhood. This area of South Lake Union already has its share of new and longtime residents. The first new apartment building, Alcyone, opened its doors in 2004 and this month, a second community known as Alley24 will begin moving in the first of its new residents [note: see related Alley24 sidebar].

As I continue my walking tour, I notice a boisterous group of children enjoying the warm summer day on the green lawns and new playfield at Cascade Park. Investigating further, I learn that many of these children are students at the New Discovery School located right across the street. The park recently underwent a much needed facelift, providing a lively and inviting outdoor space as a result. *[continued on next page]*



FACES IN THE NEIGHBORHOOD > Espresso Vivace

When Chef Emeril Lagasse gives you a thumbs up on national television, you know you must be doing something right. Referring to Espresso Vivace on the Food Network's show, "Emeril Live," he said, "I gotta tell 'ya, one of the best coffees I ever had in my life...they kicked coffee up into an art form."

That was precisely owner David Schomer's goal. "Making espresso satisfies my creative side. Since we opened our first espresso cart in 1988, it has completely captured my attention." He and his wife, Geneva Sullivan, recently opened their newest espresso bar in the Cascade neighborhood of South Lake Union. In addition to fine coffee, the bar offers three varieties of IPA beer and fresh baked goods.

"I wanted to create a space that was as beautiful as our coffee – a sanctuary for aesthetically sensitive urbanites and when I found this location, I knew it would be perfect. It was also important for me to open a bar where I knew people really appreciated fine coffee and we've found that here. The clientele we've had truly value the art of making espressos."

David has spent the past 18 years perfecting his craft and has built a national and international reputation as an exacting espresso master. He sees that same meticulous attention to detail in the revitalization of the South Lake Union neighborhood.

"The developments underway here are exactly what Seattle needs – a community where people can get out from behind the steering wheels of their cars and walk, with all the amenities you need right outside your door. It's everything I believe in and I'm thrilled to be a part of it."



My growling stomach reminds me that it's already lunchtime, so I'm especially anxious to meet Francesca, a new 2200 homeowner, at one of the many restaurants located along the scenic Lake Union waterfront. As I walk along the perimeter of the gleaming lake, I pause to watch as a lively crowd of seafarers set off in their sailboats at the Center for Wooden Boats. Once I've settled into a prime spot with Francesca on the outdoor deck of Duke's Chowder House, Francesca explains that she and her boyfriend were among the first to purchase a condominium at 2200.



"We're very much looking forward to moving in later this year – in time for Thanksgiving. We were really drawn to the stunning architectural design and refined finishes. And because we both travel a great deal for work, having all of the hotel services available to us, such as room and housekeeping service, is especially appealing."

Thanking her for her time, I head home, tired, but sated with information. I take the scenic route back home through Lake Union Park, recalling vivid images of children guiding their model boats on a leisurely afternoon or residents simply strolling along the park's new boardwalk in the near future. My mind is abuzz as I envision all of these exciting new developments in the neighborhood and wonder if I'll be able to convince my editor to give me more space for this feature article – it definitely warrants a cover story. And with brochures of Vulcan's new condominiums in my hand, I began making plans for a move of my own.

FOR MORE INFORMATION ON
SOUTH LAKE UNION, VISIT
WWW.DISCOVERSLU.COM.



DOG DAY AFTERNOON

Excerpt of a Dog's Blog in South Lake Union

About Me:

Name: Cyrus

Nickname(s): "Cy-Fi", "No, no bad dog"

Location: Seattle, WA, United States

Saturday, May 26, 2006 1 p.m. PST

My human is an odd duck – yesterday after work, she told one of our neighbors that she "worked like a dog" all week. I gave her one of those puzzled looks – you know, the ones that make humans go "awww." Tilt head, ears up – they're such suckers for a fuzzy face. Any-hoo...today she woke up early and took me for my morning constitutional around the neighborhood. Ran into Jason, who lives down the hall at the Alcyone. Cool guy, likes dogs – gave me some loving and then sent us on our way. First stop – Espresso Vivace at Alley24 to get a latte for her, and a bowl of cool water outside for me. Then to Cascade Park! Yes! We hang out, do a little dog watching, try to scare away some squirrels – darn leash laws. Afterward we headed over to my favorite place – the Barking Lounge. Hank was there, so was Bosco and cute little Roxie – grrrr. My human sat around with some of her friends and I ran around sniffing out some new friends of my own. Later, we walked over to Urban Beast to pick up some essentials – a new Frisbee, Greenies, Kong toys and then on to Paddy Coyne's so she could meet some neighbors for lunch. I decided to stay outside – it had NOTHING to do with her telling me to "stay." Hung out with that odd dog outside – he never moves his body, his head just bobs up and down, like, "yeah, yeah, whatever." My human says he's a "metal" dog, whatever kind of breed that is. We just got home for my afternoon nap. And she calls this "work?" Like I said, she's an odd duck. After my nap – off for a walk around the lake! This is the life.

My favorite links: www.alcyoneapartments.com > www.paddycoynes.net
www.urbanbeast-seattle.com > www.barkinglounge.com
www.espressovivace.com > www.alley24.com

FACES IN THE NEIGHBORHOOD > Duke's Chowder House



Not all of the faces in South Lake Union are new. People have been "clam"-oring for the award-winning chowder at Duke's Chowder House since it opened in Chander's Cove in 1989. Duke Moscrip owns four Duke's Chowder House restaurants – one in Greenlake, one in Alki, one in Kent and of course, one in South Lake Union. His restaurants are so popular that Mayor Nickels proclaimed November 10, 2005 "International Chowder Day" encouraging all Seattle-ite chowder-heads to "Chowder On" by trying a cup of one of the restaurant's acclaimed chowders.

As a prominent Seattle entrepreneur, Duke has enjoyed watching the South Lake Union neighborhood evolve. "I believe this neighborhood will be the jewel in Seattle's crown, a city within the city." While visiting South Lake Union this summer, be sure to stop by Duke's Chowder House. You can sit on the outdoor patio, sip your favorite drink, devour a bowl of chowder, and watch the seaplanes fly by overhead. You'll see for yourself why this South Lake Union icon has long been a popular destination spot for all sea-fare loving Seattle-ites.





Where can you find a premium Leica camera, a 200-year-old Ganesha statue, rugged hiking boots, refreshing German Weiss Bier, double bass drum pedals, or just a carton of milk? The answer shouldn't surprise you – South Lake Union. The neighborhood has long been home to shops and restaurants that have contributed their own distinctive flavor to the area, including REI, Feathered Friends, Guitar Center, Daniel's Broiler and Ducati Seattle, just to name a few.

BE SURE TO EXPLORE OTHER RECENT AND UPCOMING SPOTS IN THE NEIGHBORHOOD, INCLUDING:

Feierabend | You can almost hear the distant strains of an Oompa band as you enter this German-style tavern located two blocks north of the REI building. Boasting the largest selection of imported German beers on the west coast, the food's pretty darn good too. www.feierabendseattle.com

Koot's Green Tea | Japanese purveyors of the finest premium green tea and related beverages, rolled sushi and other natural, wholesome offerings, Koot's Green Tea will introduce a refreshing Japanese green tea experience in South Lake Union this fall at 2200.

Pande Cameron | Importers and retailers of fine imported carpets, this Seattle institution relocated to South Lake Union and doesn't just feature your typical rugs – they're works of art for your floors. www.pande-cameron.com

COMING SOON > 8TH AVENUE DISTRICT

Veer Lofts

Revel in What You Create

LOCATION 9th and Harrison

URL www.veerlofts.com



Do you eschew watches and Blackberrys? Think life is better unscripted? Never used the word "download" to describe anything other than computer software? Then Veer Lofts is the perfect address for you.

Merging an organic, industrial style with color and light, the 94 lofts at Veer will boast exposed wood beam ceilings, concrete floors, open flexible floor plans with 10 to 16 foot ceilings, private outdoor decks and even a rooftop bocce ball court. With your living spaces as your canvas, homeowners are encouraged to bring their own creative masterpiece to life. Splash the walls with vibrant tones, hang quirky art from the ceilings, plaster the rooms with show flyers – it's your space, you're only limited by your imagination. For those who are about to loft, we salute you.



WHAT'S IN THE FRIDGE

Home-brewed beer

WHAT WILL BE ON YOUR IPOD

KEXP's latest podcast

FAVORITE VACATION

Surfing in Sayulita, Mexico

WHEN NOT RELAXING AT HOME, MOST LIKELY FOUND

Screening your latest "short" at 911 Media Arts Center

SCHEDULE THE MOVERS

Fall 2007

Patricia Cameron Gallery | Now that you have the art for your floors from Pande-Cameron, you can add some to your walls from Patricia Cameron. The gallery offers paintings, mixed media, sculpture and works on paper by both emerging and established artists. Every six weeks, the gallery also hosts an opening for a new exhibit. www.pcameronfineart.com

tottini | The name says it all. This store opening at Alley24 later this summer will feature modern children's furnishings, furniture and apparel – everything you need for the discerning urban tot. www.tottini.com

Urban Beast | City-fied pets and their owners will appreciate this new boutique opening this summer at Alley24. The store includes gifts and products for both people and the animals they love. They even offer training courses to ensure your canine is properly civilized. www.urbanbeast-seattle.com

Urban Monkeys | While your little monkey plays, you can relax the stress away at this one-of-a-kind, play space/spa. As parents partake in one of the many spa services, their children are engaged in fun, organized play activities. www.gourbanmonkeys.com





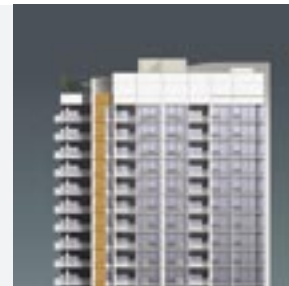
COMING SOON > TO A CINERAMA THEATRE NEAR YOU

The Martin

Use Less. Recycle More. Repeat.

LOCATION 5th and Lenora

URL www.themartinseattle.com



Lights. Camera. Action. Your life is about to go all “red carpet” on you as The Martin makes its premiere at 5th and Lenora right next door to the Cinerama Theatre. The 23-story community of 172 homes is where mid-century modern meets techno-organic sensibilities. Interior design elements such as upbeat colors, expansive windows, Italian cabinetry, renewable materials and sliding glass doors create an entirely fresh way of looking at things.

Homeowners will especially appreciate the 23rd-floor amenities with stunning views of the city, Puget Sound, and Lake Union. From this breathtaking vantage point, they can work out in the fully equipped exercise facility, entertain in the expansive community room, grill in the outdoor kitchen, relax by the firepit, or get their hands dirty in the rooftop P-patch. As a pet friendly community, there's even a 6th floor dog park and grooming station for large and small dogs. And you couldn't ask for a better set location – The Martin is an easy walk to downtown shopping and Belltown nightlife.

Think of The Martin as a whole new genre in a sea of predictable action/drama/chick flicks.



WHAT WILL BE ON THE BAR

Sofia Mini

WHAT WILL BE ON YOUR IPOD

Soundtrack from Pulp Fiction

FAVORITE VACATION

South Beach

WHEN NOT RELAXING AT HOME, MOST LIKELY FOUND



Chowing down at Top Pot Doughnuts or happy hour at Palace Kitchen

SCHEDULE THE MOVERS

Spring 2008

FACES IN THE NEIGHBORHOOD > James Schmidt

What do barbecue pork ribs, Guinness braised Irish stew, and a jumbo burrito all have in common? No, that's not the start of a really bad joke; it's a reference to the prolific restaurant portfolio of South Lake Union businessman, James Schmidt.

James has three restaurants in South Lake Union – which really should come as no surprise. After all, as president and co-founder of the Taco Del Mar Company, his corporate headquarters have been in the neighborhood for 12 years.

A powerful force in the area, James and his partners have opened two South Lake Union restaurants in the last two years alone – Slo Joe's Bigtime Backyard BBQ and Paddy Coyne's Irish Pub. They join the third restaurant, Taco Del Mar, which has been a neighborhood staple for years. “I really wanted to bring a diversity of dining options to the area, reflecting the diversity of the neighborhood itself.” He's also preparing to open a fourth restaurant, tentatively called Cascade Grill, on the street level of the Alley24 community.

So whether you're looking to find your inner Baja, celebrate your Irish roots, or are just hankerin' for some good old fashioned barbecue, you'll find it in South Lake Union.



My dearest automobile,

I know we've meant a lot to each other over the years. You've stuck with me through thick and thin traffic, patiently idling in a rush hour commute that would make a far less tolerant car honk in exasperation. You've gone with me to see friends and family, carried me away on fabulous getaways, and steered me to the area's best restaurants, shops and events.

But I'm afraid things between us must end. You see, secretly, I've always resented you. The toll you've taken on my finances is one I can no longer afford. So I've decided to make some drastic changes in my life.

First off, I'm moving to a downtown Seattle neighborhood – South Lake Union, to be exact. There, I'll be able to walk or bike nearly everywhere I need to go – work, parks, restaurants, shops. Makes my feet want to do a little happy dance.



South Lake Union Streetcar

Know what else? This July, they'll begin building the new South Lake Union streetcar line. It's incredible! As early as next year, I'll be able to hop on board, sit back and enjoy a leisurely ride to downtown and neighborhood hotspots where I can shop, grab a bite to eat or connect up with regional buses and light rail at Westlake Center to travel even further distances.

Plus, the bane of our mutual existence – the so called "Mercer Mess" – could soon become just a distant memory. Many

a day, we've been stuck together in the gridlock, me grinding my teeth, you, your brakes, as we inch along toward I-5. Remember those near misses as we'd narrowly dodge drivers scrambling across four lanes of traffic? Gives me chills just thinking about it.

Current plans call for reconfiguring today's congested Mercer Street into a more pleasant and accessible two-way, tree-lined boulevard – providing safer and quicker access to almost any destination. The transformation also calls for Valley Street to get its own facelift as a pedestrian and bike friendly lakefront avenue. No more zig-zagging routes that defy logic – I'd have a straight shot to Seattle Center and other nearby neighborhoods via Mercer, Harrison and Thomas Streets that would run over a lowered Aurora Avenue.



I know what you're thinking, my little gas guzzler. You're thinking that once you and I part ways I will no longer be able to connect up with friends and family who don't live in the city. You're thinking that those weekend trips up into the mountains for a hike will be a thing of the past.

To that I have but one word to say – Flexcar. South Lake Union already has quite a few of these car-sharing vehicles, and more are on the way. All I have to do is reserve one for the day and I'm off – no worries about maintenance, no worries about paying for gas, no worries about monthly auto loan payments – no worries period.



My friend, Liv, is moving to the neighborhood too. She has that electric car you're always sneering at when we're at the gas pump. She's renting an apartment at the Alcyone – they have an electric car charging station there. With her "green" sensibility, it's absolutely perfect for her! In fact, I may even get one just like it. I can park it in my building's controlled access garage and take it out for a spin now and then.

So you see, my precious road hog, it's really for the best. For me at least. And the community. Oh – and the environment. You can tell the other cars in the lot that I've decided to take up an alternative lifestyle. I'm sure they'll understand.

Yours truly,
Carla S.

WHAT THE COMMUNITY THINKS >

"Reconfiguring Mercer Street and lowering Aurora Avenue will successfully reconnect neighborhood communities and improve access for bikes, pedestrians, and transit."

-David Hiller, Advocacy Director of Cascade Bicycle Club

"We strongly support both the streetcar and reconfiguration of Mercer and surrounding streets which will provide the community with safer, easier access to the new Lake Union Park."

-Phyllis Lamphere, former Seattle City Councilwoman and current board member of Seattle Parks Foundation

"The Mercer Corridor will be critical for east-west trips during the Viaduct replacement. If we don't fix Mercer now, the local freight businesses will suffer."

- Kent Melton, commercial truck driver

"By improving transportation connections, Uptown Queen Anne and South Lake Union are going to be Seattle's twin stars of economic development."

-John Coney, Vice President of Queen Anne Uptown Alliance

South Lake Union is truly a neighborhood full of surprises at every corner – where you'll discover endless possibilities to satisfy your senses as well as appreciate the area's unique history and vibrant culture. Come explore South Lake Union's five distinct districts and you'll understand why no two days in the neighborhood can ever be quite the same.

5

Cascade Neighborhood

Look for the *ceramic tile mosaics* embedded in the sidewalk throughout the district.

Do some technical climbing on the Pinnacle, a 65-foot indoor rock at REI's flagship store at Yale Avenue and John Street.

Read Gaelic? Then check out the inscription above the bar at Paddy Coyne's Irish Pub at Thomas Street and Minor Avenue.

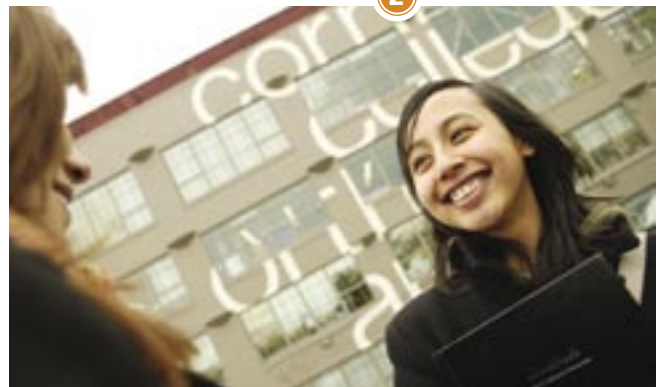
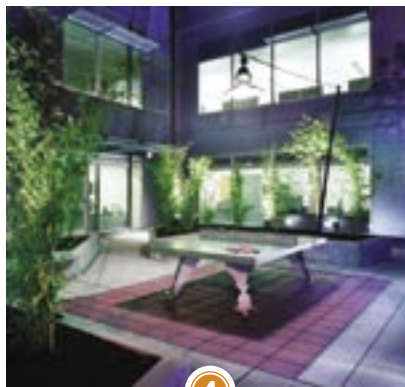
St. Spiridon's Cathedral—with its stop-you-in-your-tracks blue onion domes—is worth ogling at Yale Avenue and Harrison Street.

Gateway District

Pretend it's 1967, 3 a.m., and you're Frank Sinatra when you slip into the ever-cool confines of Seattle's 24-hour 13 Coins Restaurant at Boren Avenue and John Street.

Want to see a little bit of old Norway? Ya, you betcha. The 1915 Sons of Norway Hall at Boren and Stewart is now a performance space for the *Cornish College of the Arts*.

Wow your friends with your knowledge of obscure Seattle trivia. Westlake Avenue, the main thoroughfare from downtown to Lake Union, used to be called Rollin Street.



8th Avenue District

Denny Park, Seattle's first public park, still serves as a six-acre urban oasis at Denny Way and Dexter. Look for the statue of early Seattle preacher, Mark Matthews.

What's a banya? It's a Russian health spa that heats you up and then cools you down with an exhilarating plunge. Seattle's version, Banya 5, is at 9th Avenue, north of Denny.

Seattle's mecca for urban beverageologists is on 9th Avenue at Thomas. It's where Jones Soda's interesting flavors and even more interesting labels come from.

Westlake/Terry District

A *bronze Ping Pong table* as art? Definitely. Find the outdoor plaza on Harrison just off Terry. Cut into the legs are profiles of eight noted scientists. Really.

Art meets science in front of SBRI on Westlake at Thomas. Colorful glass panels represent the genetic sequence of *Leishmania*—a parasite studied at SBRI that causes a disease affecting 12 million people each year.

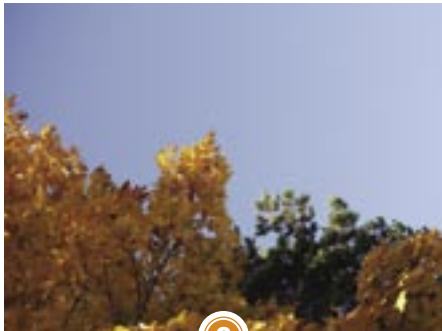
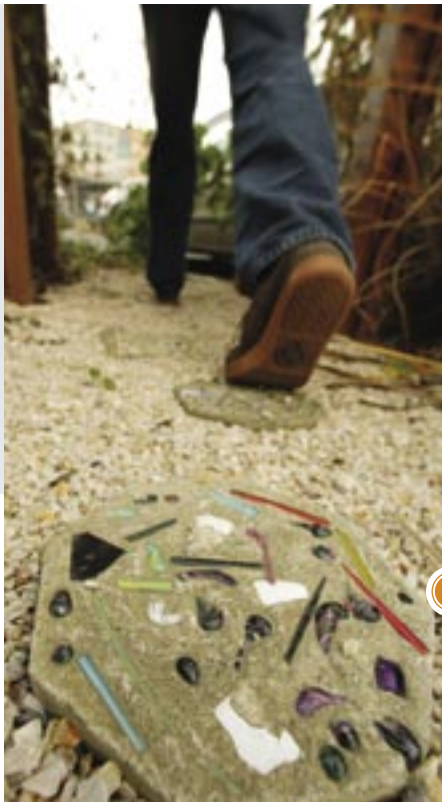
Where oh where can you find 14th century Vietnamese porcelains discovered in a shipwreck? No problem. Head for Honeychurch Antiques at Westlake and Harrison.

Lakefront District

Sneak a peek at the ornate terra cotta "F" on the pillars of Shurgard's parking garage at Valley and Fairview. They're from 1913 when the building was a Ford assembly plant.

Avast! The Wawona, one of the largest three-masted schooners ever built on the west coast, sails no more at the Northwest Seaport off Valley Street.

What's that big white art deco building north of Valley on the lakefront? It's the Naval Reserve Building, built in 1941 and now part of Lake Union Park.



GUIDE TO SUMMER FUN IN SOUTH LAKE UNION

CINEMA ON THE LAWN:

Every other Friday beginning June 30

Grab your blanket, bring your friends and head on over to the South Lake Union Discovery Center for Cinema on the Lawn, Seattle's newest summertime tradition. Brought to you by Vulcan, KEXP and the Seattle International Film Festival (SIFF), the \$5 suggested donation benefits both KEXP and SIFF. Films begin 30 minutes after dusk, but don't wait to grab your seat – music, food, beer and wine are all on hand to keep you entertained prior to "curtain call." Festivities take place on the spacious lawn behind the Discovery Center at the northwest corner of the intersection of Denny and Westlake.

June 30: **Party Girl**

July 14: **Xanadu**

July 28: **KEXP DJ Selection**

August 11: **Napoleon Dynamite**

August 25: **Exclusive SIFF Screening – TBD**

For more information, visit www.cinemaonthelawn.com



SOUTH LAKE UNION BLOCK PARTY:

August 11 & 12

Discover what makes South Lake Union so exciting as Seattle's newest Block Party returns this August for two days of lively outdoor fun and entertainment for all ages. Come for the kick-off on Friday, August 11 and enjoy live music, food, beer, wine and a screening of Napoleon Dynamite. Then return on August 12 from 11 a.m. to 9 p.m. and dance to live music, relax with friends in the beer garden, and grab a bite to eat at one of the many savory food vendors. Additional highlights include a kid's area, South Lake Union Grill-Off and a Seattle favorite – Gay Bingo!

For more information, visit www.slublockparty.com.



COMING SOON > GATEWAY DISTRICT

Rollin Street

Here's to Life Without Walls

LOCATION Northeast corner of Denny and Westlake intersection

URL www.rollinstreet.com



No one could ever accuse you of being a traditionalist. You embrace change, shun trends and celebrate all of life's possibilities. Just like the 208 SoHo-styled flats at Rollin Street. With 10-foot plus ceiling heights, floor to ceiling windows and no interior walls to cramp your style, they're a break from the "business as usual" boxy condominium.

Designed by Ankrom Moisan, one of the leading architects behind Portland's popular Pearl District, the flats embrace minimalism with their wide open floor plans, gallery-size walls, hardwood floors and floor to ceiling glass. Located across the street from Whole Foods Market®, Pan Pacific Hotel and the boutiques and restaurants at 2200, homeowners will also enjoy in-building amenities such as a guest suite, two rooftop view decks, a community room with kitchen – even wine storage for homeowners. Cheers! Here's to life at Rollin Street.

WHAT YOU WOULD LIKELY FIND IN THE WINE RACK

L'Ecole No. 41
Cabernet Sauvignon

WHAT WILL BE ON YOUR IPOD Anything by Nina Simone

FAVORITE VACATION
Exploring art galleries
in New York City



WHEN NOT RELAXING AT HOME,
MOST LIKELY FOUND
Enjoying a great meal and sold-out
performance at the Triple Door

SCHEDULE THE MOVERS
Fall 2008



CONDO PREVIEW EVENT AT >

SOUTH LAKE UNION DISCOVERY CENTER: JUNE 17

Come satisfy your curiosity about living in South Lake Union at this exclusive pre-sales summer event, where you'll be among the first prospective homebuyers to get a sneak peek at Vulcan's new condominium projects underway and find out how to reserve your new home! Explore each distinctive project, view interior design concepts and floor plans, and kick off the exciting process of soon calling one of these urban sanctuaries your new address.

For more information and to sign up for a personal invitation, visit the Discovery Center at 101 Westlake Ave. N, go to www.discover slu.com or call (206) 342-5900.

